

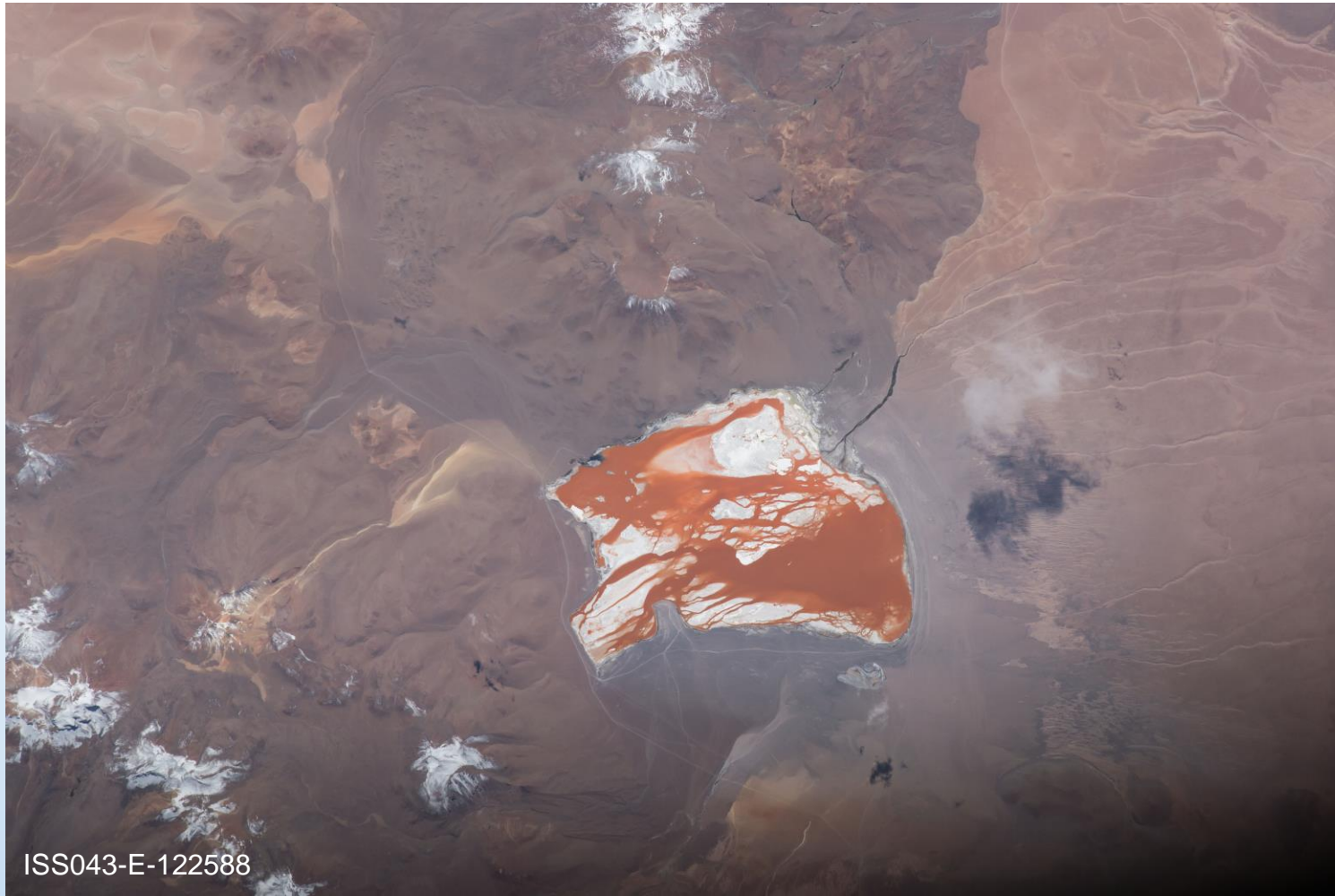


WHERE IN THE WORLD IMAGE QUIZ

**Are you ready to test your world geography skills and learn
about landforms from all over the world?**

***Click here
to begin!***

*Developed by Astromaterials Research and Exploration Science (ARES) at the NASA Johnson Space Center (JSC)
Images courtesy of the Earth Science and Remote Sensing (ESRS) Unit, NASA JSC (<https://eol.jsc.nasa.gov>)
Background image ISS030-E-5125*



WHERE IN THE WORLD IS THIS?

**Emerald Lakes,
New Zealand**

Lake Baikal, Russia

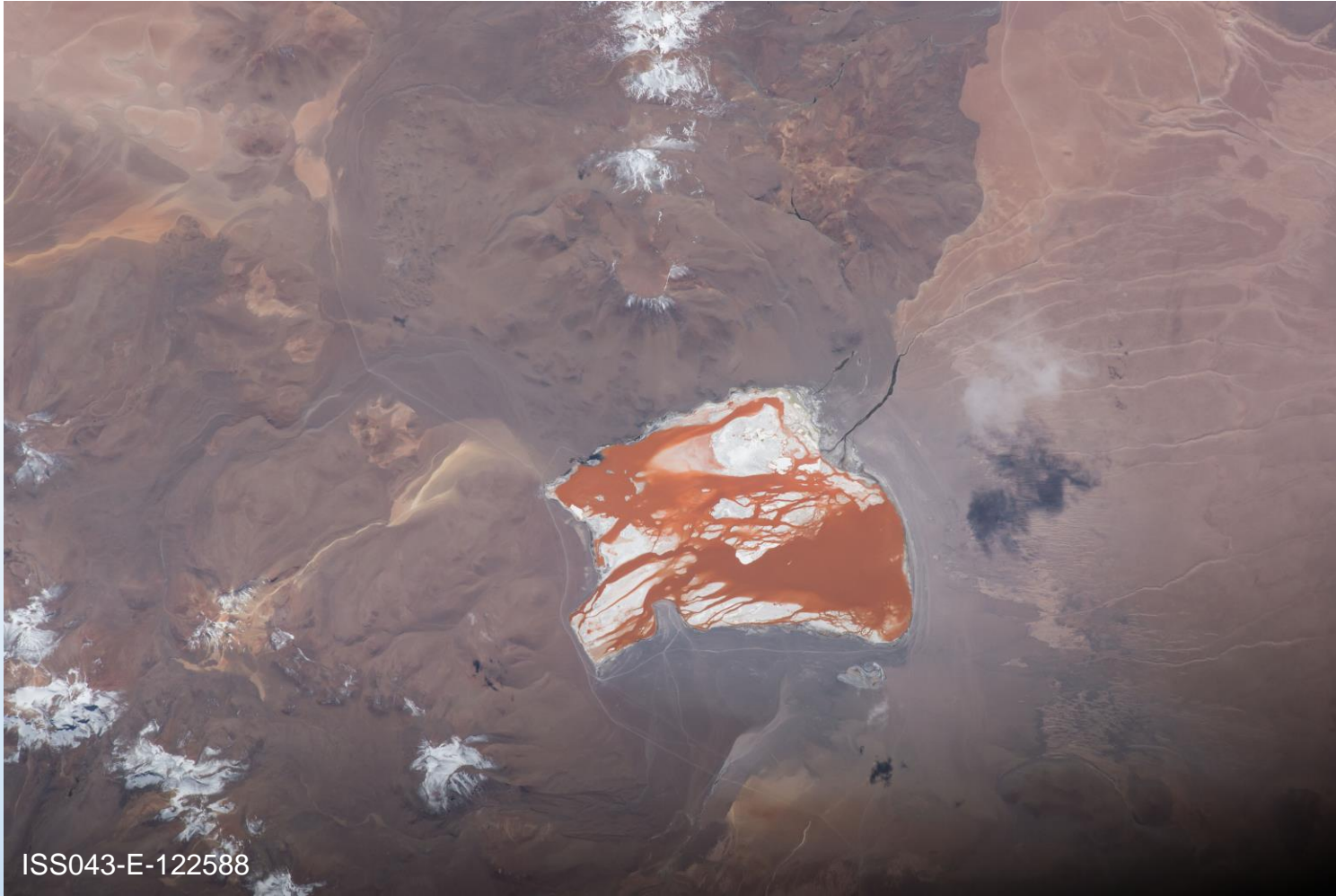
**Laguna Colorada,
Bolivia**

BACK

HINTS

- This lake is located in South America.
- In a country landlocked by Peru, Chile, Argentina, Paraguay & Brazil.

NEXT



WHERE IN THE WORLD IS THIS?

The Emerald Lakes are located in the island nation of New Zealand. **Try again.**

Lake Baikal, Russia

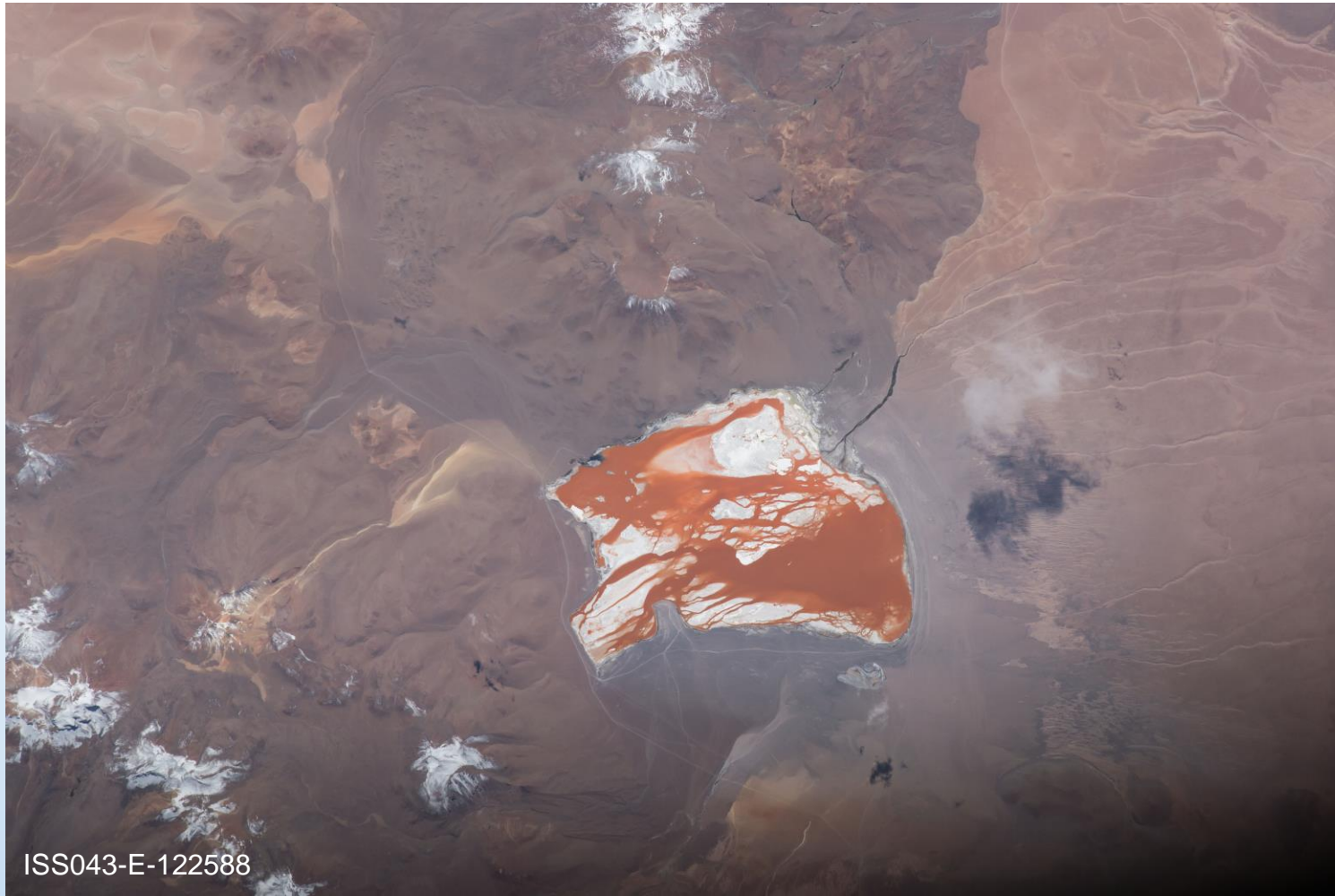
**Laguna Colorada,
Bolivia**

BACK

HINTS

- This lake is located in South America.
- In a country landlocked by Peru, Chile, Argentina, Paraguay & Brazil.

NEXT



WHERE IN THE WORLD IS THIS?

**Emerald Lakes,
New Zealand**

Lake Baikal is located in eastern Russia. **Try again.**

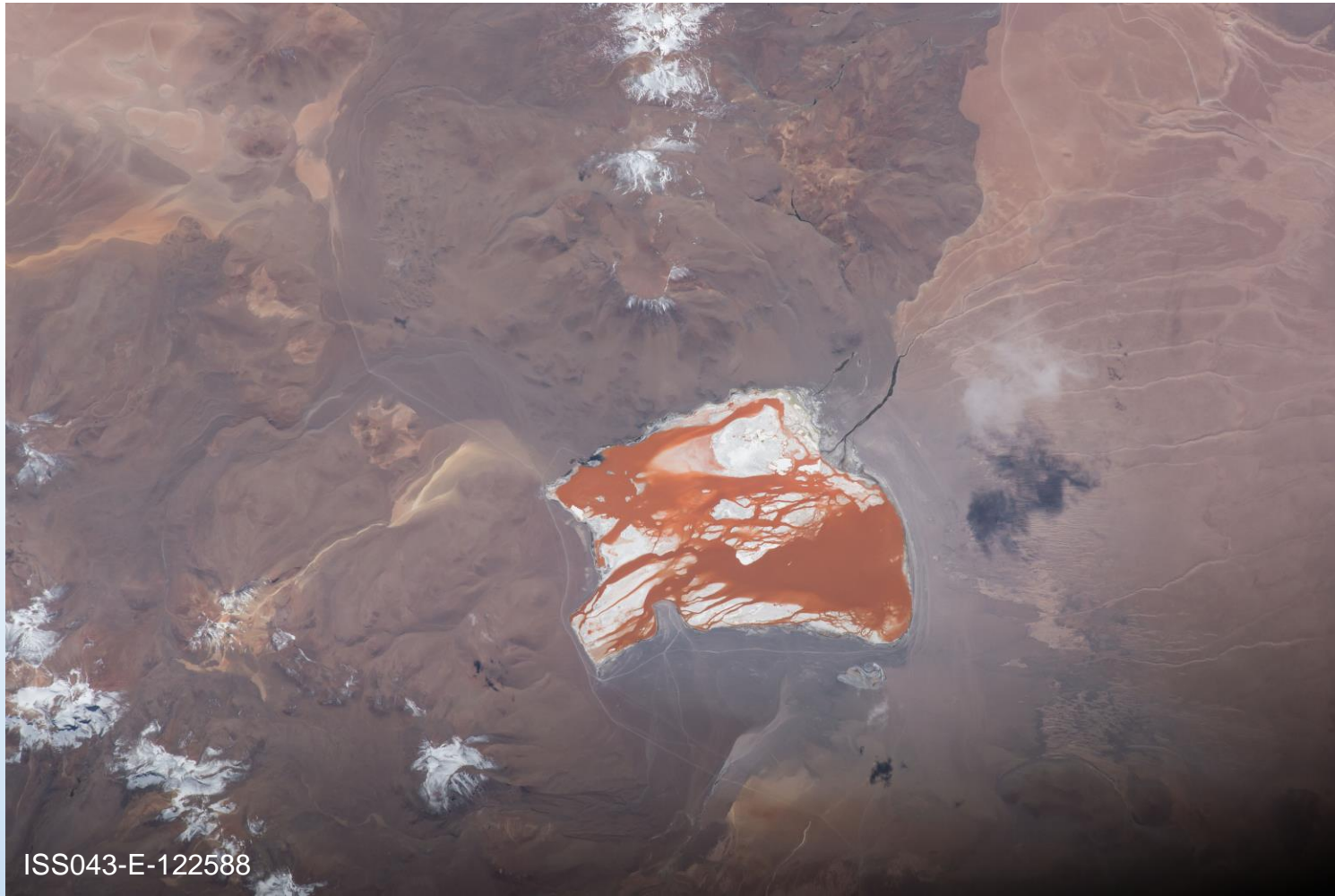
**Laguna Colorada,
Bolivia**

BACK

HINTS

- This lake is located in South America.
- In a country landlocked by Peru, Chile, Argentina, Paraguay & Brazil.

NEXT



WHERE IN THE WORLD IS THIS?

CORRECT! This is *Laguna Colorada, Bolivia*.

Did you know? The red/brown color of this lake is caused by algae living in the water. Different types of algae live in water depending on the temperature and salinity.

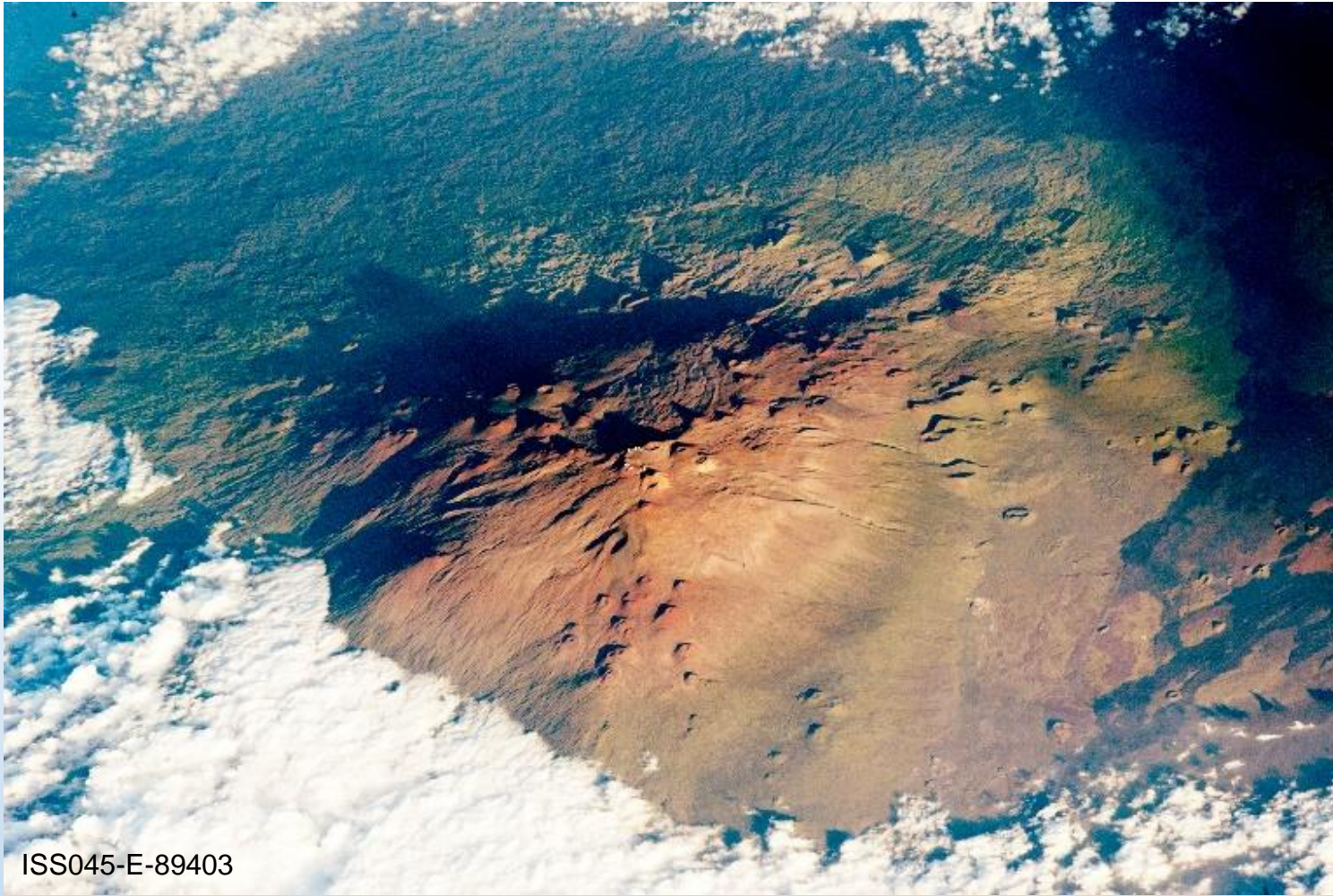
Learn more about this image by clicking [here](#).

BACK

HINTS

- This lake is located in South America.
- In a country landlocked by Peru, Chile, Argentina, Paraguay & Brazil.

NEXT



WHERE IN THE WORLD IS THIS?

**Mauna Kea, HI,
United States**

Mount Fuji, Japan

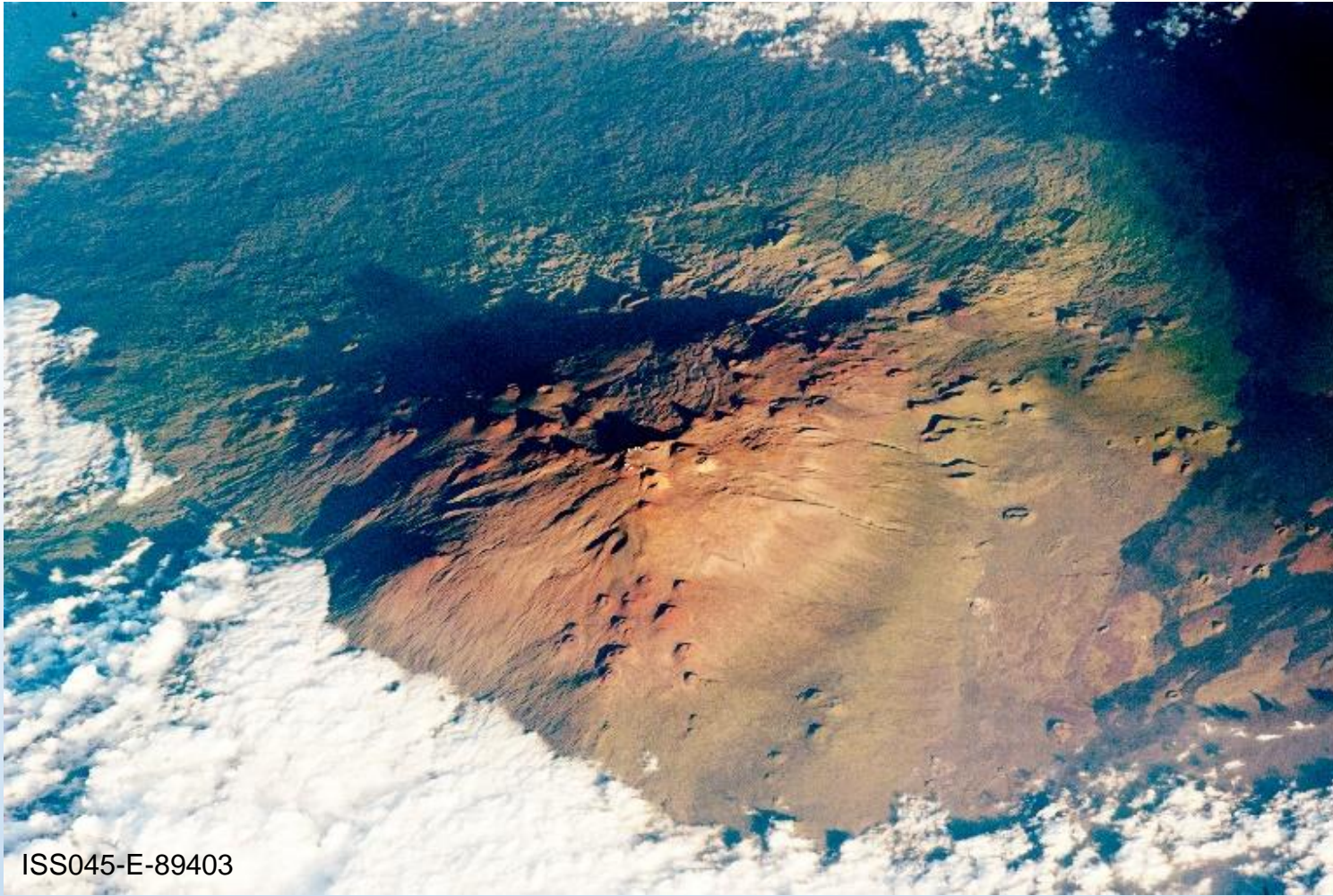
**Mount Hood, OR,
United States**

BACK

HINTS

- Located on an island in the Pacific Ocean.
- Tallest volcano on the only island state of the United States.

NEXT



WHERE IN THE WORLD IS THIS?

**Mauna Kea, HI,
United States**

Mount Fuji is in the Pacific Ocean, but is on the island nation of Japan. **Try again.**

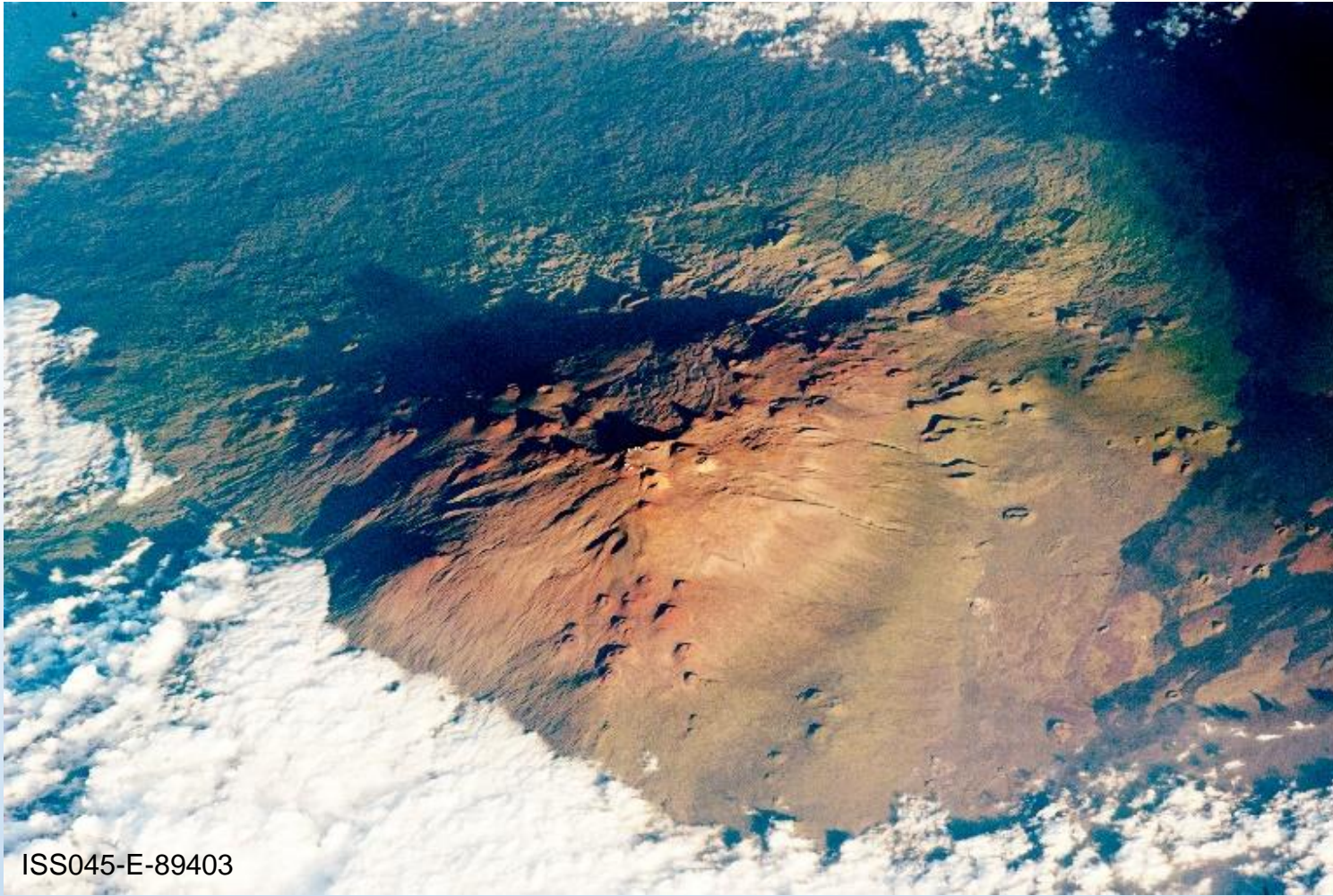
**Mount Hood, OR,
United States**

BACK

HINTS

- Located on an island in the Pacific Ocean.
- Tallest volcano on the only island state of the United States.

NEXT



WHERE IN THE WORLD IS THIS?

**Mauna Kea, HI,
United States**

Mount Fuji, Japan

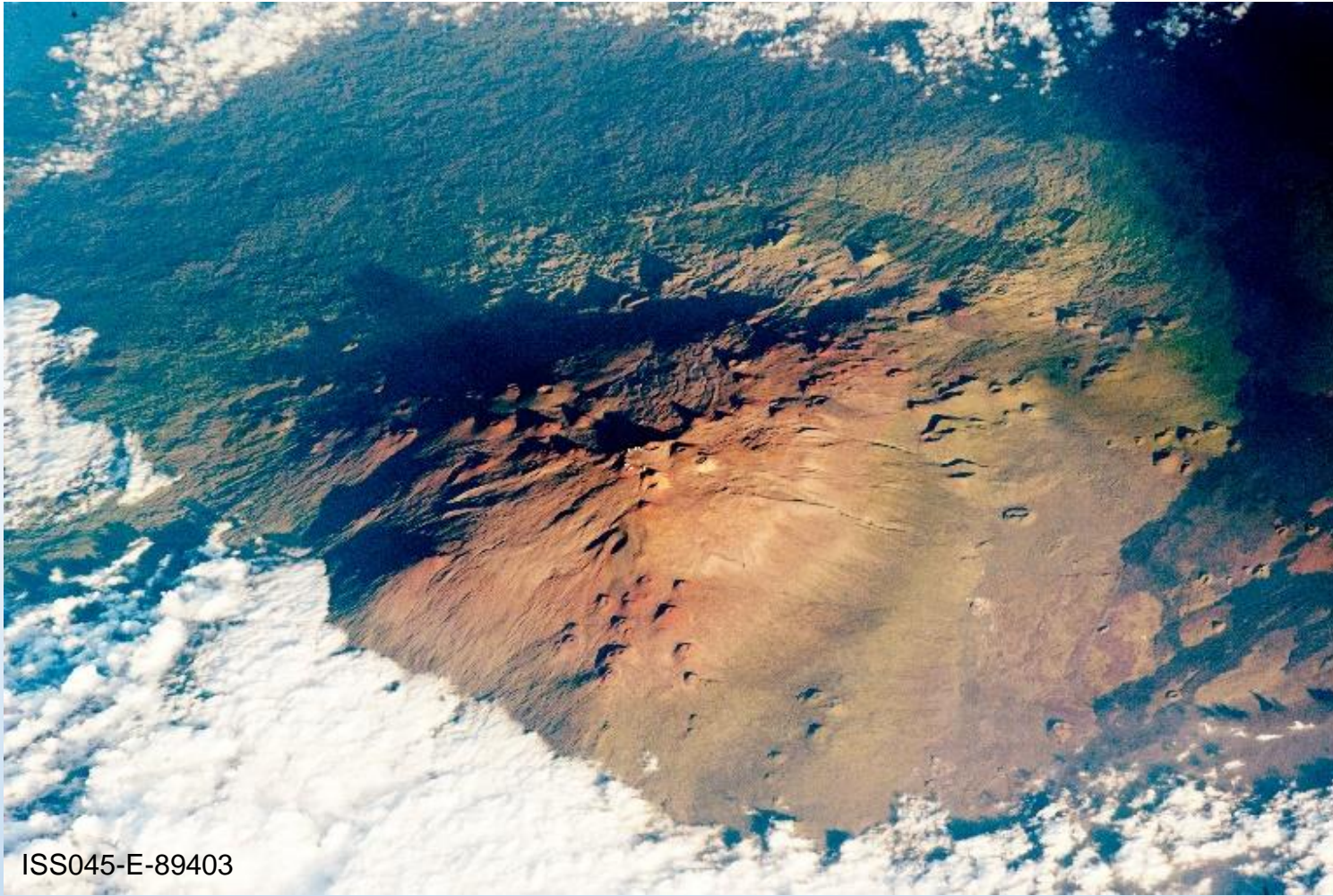
Mount Hood is the highest mountain in Oregon, located in the northwest corner of the continental US. **Try again.**

BACK

HINTS

- Located on an island in the Pacific Ocean.
- Tallest volcano on the only island state of the United States.

NEXT



WHERE IN THE WORLD IS THIS?

CORRECT! This is *Mauna Kea, HI, United States.*

Did you know? Mauna Kea, which means “White Mountain,” is the only volcano in Hawaii that has evidence of glaciation. Mauna Kea last erupted almost 5,000 years ago!

Learn more about this image by clicking [here](#).

BACK

HINTS

- Located on an island in the Pacific Ocean.
- Tallest volcano on the only island state of the United States.

NEXT



WHERE IN THE WORLD IS THIS?

Los Angeles, CA,
United States

New York City, NY,
United States

Houston, TX,
United States

BACK

HINTS

- This city is in the center of this image showing northeast US at night.
- Largest city (by population) and home to the Empire State Building.

NEXT



WHERE IN THE WORLD IS THIS?

Los Angeles, California is on the west coast of the US, and is the 2nd largest city (by population).
Try again.

**New York City, NY,
United States**

**Houston, TX,
United States**

BACK

HINTS

- This city is in the center of this image showing northeast US at night.
- Largest city (by population) and home to the Empire State Building.

NEXT



WHERE IN THE WORLD IS THIS?

Los Angeles, CA,
United States

New York City, NY,
United States

Houston, Texas is on the
southeastern gulf coast of the
US, and is not the largest city
(by population). **Try again.**

BACK

HINTS

- This city is in the center of this image showing northeast US at night.
- Largest city (by population) and home to the Empire State Building.

NEXT



WHERE IN THE WORLD IS THIS?

CORRECT! This is *New York City, NY, United States*.

Did you know? This image extends from Philadelphia, PA (lower left) to Hartford, CT (top right) with New York City located near the center. The more densely populated an area is, the more intense the night lights appear in the image.

Learn more about this image by clicking [here](#).

BACK

HINTS

- This city is in the center of this image showing northeast US at night.
- Largest city (by population) and home to the Empire State Building.

NEXT



WHERE IN THE WORLD IS THIS?

**Yucatán Peninsula,
Mexico**

**Cape Peninsula,
South Africa**

**Nicoya Peninsula,
Costa Rica**

BACK

HINTS

- Located near the tip of the 2nd largest continent in the world.
- Surrounded by the waters where the Indian and Atlantic Oceans meet.

NEXT



WHERE IN THE WORLD IS THIS?

Yucatán Peninsula is in North America (3rd largest continent), surrounded by the Gulf of Mexico & Caribbean Sea. **Try again.**

**Cape Peninsula,
South Africa**

**Nicoya Peninsula,
Costa Rica**

BACK

HINTS

- Located near the tip of the 2nd largest continent in the world.
- Surrounded by the waters where the Indian and Atlantic Oceans meet.

NEXT



WHERE IN THE WORLD IS THIS?

**Yucatán Peninsula,
Mexico**

**Cape Peninsula,
South Africa**

Nicoya Peninsula is in North America (3rd largest continent), with coasts along the Caribbean Sea & Pacific Ocean. **Try again.**

BACK

HINTS

- Located near the tip of the 2nd largest continent in the world.
- Surrounded by the waters where the Indian and Atlantic Oceans meet.

NEXT



WHERE IN THE WORLD IS THIS?

CORRECT! This is *Cape Peninsula, South Africa*.

Did you know? Near the tip of Cape Peninsula is the Cape of Good Hope where waters are very rough and dangerous for ships. According to folklore, the many shipwrecks in the area led to the legend of the Flying Dutchman.

Learn more about this image by clicking [here](#).

BACK

HINTS

- Located near the tip of the 2nd largest continent in the world.
- Surrounded by the waters where the Indian and Atlantic Oceans meet.

NEXT



WHERE IN THE WORLD IS THIS?

Eagle Beach, Aruba

**Kaneohe Bay, HI,
United States**

**The Great Barrier
Reef, Australia**

BACK

HINTS

- Located in the Coral Sea off the coast of its country/continent.
- Part of the world's largest coral reef system.

NEXT



WHERE IN THE WORLD IS THIS?

Eagle Beach is in the Caribbean Sea, just off the northern coast of South America. **Try again.**

**Kaneohe Bay, HI,
United States**

**The Great Barrier
Reef, Australia**

BACK

HINTS

- Located in the Coral Sea off the coast of its country/continent.
- Part of the world's largest coral reef system.

NEXT



WHERE IN THE WORLD IS THIS?

Eagle Beach, Aruba

Kaneohe Bay is in the Pacific Ocean on the island of O'ahu in Hawaii. **Try again.**

The Great Barrier Reef, Australia

BACK

HINTS

- Located in the Coral Sea off the coast of its country/continent.
- Part of the world's largest coral reef system.

NEXT



WHERE IN THE WORLD IS THIS?

CORRECT! This is *The Great Barrier Reef, Australia*.

Did you know? The Great Barrier Reef is the largest reef system on Earth with over 3,000 reefs and coral cays. It is home to 600 types of coral and thousands of animals species.

Learn more about this image by clicking [here](#).

BACK

HINTS

- Located in the Coral Sea off the coast of its country/continent.
- Part of the world's largest coral reef system.

NEXT



WHERE IN THE WORLD IS THIS?

The Nile River

The Amazon River

The Mississippi
River

BACK

HINTS

- It is one of the longest rivers in the world.
- This river's delta spreads out into the Mediterranean Sea.

NEXT



WHERE IN THE WORLD IS THIS?

The Nile River

The Amazon River is one of the longest rivers in the world, but it empties into the Atlantic Ocean through Brazil. **Try again.**

**The Mississippi
River**

BACK

HINTS

- It is one of the longest rivers in the world.
- This river's delta spreads out into the Mediterranean Sea.

NEXT



WHERE IN THE WORLD IS THIS?

The Nile River

The Amazon River

The Mississippi River is one of the longest rivers in the US and its river delta spreads out into the Gulf of Mexico. **Try again.**

BACK

HINTS

- It is one of the longest rivers in the world.
- This river's delta spreads out into the Mediterranean Sea.

NEXT



WHERE IN THE WORLD IS THIS?

CORRECT! This is *The Nile River*.

Did you know? The lights along the Nile River highlight the concentrated populations that live in these areas. The Nile River Delta, visible at the end of the Nile River, is one of the world's largest deltas. This area is a rich agricultural region thanks to the sediment deposits from the Nile.

Learn more about this image by clicking [here](#).

BACK

HINTS

- It is one of the longest rivers in the world.
- This river's delta spreads out into the Mediterranean Sea.

NEXT



WHERE IN THE WORLD IS THIS?

**Antananarivo,
Madagascar**

Venice, Italy

Male, Maldives

BACK

HINTS

- Located in Europe in the northwest corner of the Adriatic Sea.
- Popular tourist location in a city nicknamed the “City of Canals.”

NEXT



WHERE IN THE WORLD IS THIS?

Antananarivo, Madagascar is on an island country in the Indian Ocean. **Try again.**

Venice, Italy

Male, Maldives

BACK

HINTS

- Located in Europe in the northwest corner of the Adriatic Sea.
- Popular tourist location in a city nicknamed the “City of Canals.”

NEXT



ISS001-E-6691

WHERE IN THE WORLD IS THIS?

**Antananarivo,
Madagascar**

Venice, Italy

Male, Maldives, is located southwest of India in the Arabian Sea. **Try again.**

BACK

HINTS

- Located in Europe in the northwest corner of the Adriatic Sea.
- Popular tourist location in a city nicknamed the “City of Canals.”

NEXT



WHERE IN THE WORLD IS THIS?

CORRECT! This is *Venice, Italy*.

Did you know? For centuries, Venice has been able to adjust to a 3ft (~1m) tidal range. However, regional land sinking (subsidence) and slight rises in sea level pose a threat to this historic city.

Learn more about this image by clicking [here](#).

BACK

HINTS

- Located in Europe in the northwest corner of the Adriatic Sea.
- Popular tourist location in a city nicknamed the “City of Canals.”

NEXT



WHERE IN THE WORLD IS THIS?

**Sierra Nevada
Mountains**

**Appalachian
Mountains**

Rocky Mountains

BACK

HINTS

- Mountain range that stretches from Canada to New Mexico.
- This section is in Colorado and includes part of the Great Divide.

NEXT



WHERE IN THE WORLD IS THIS?

The Sierra Nevada Mountains are mostly within the state of California. **Try again.**

**Appalachian
Mountains**

Rocky Mountains

BACK

HINTS

- Mountain range that stretches from Canada to New Mexico.
- This section is in Colorado and includes part of the Great Divide.

NEXT



WHERE IN THE WORLD IS THIS?

**Sierra Nevada
Mountains**

The Appalachian Mountains extend from Canada through many east coast US states. Try again.

Rocky Mountains

BACK

HINTS

- Mountain range that stretches from Canada to New Mexico.
- This section is in Colorado and includes part of the Great Divide.

NEXT



WHERE IN THE WORLD IS THIS?

CORRECT! This is the *Rocky Mountains*.

Did you know? Apollo astronauts, in preparation for traveling to the Moon, participated in geology training in the San Juan Range of these Colorado Rocky Mountains.

Learn more about this image by clicking [here](#).

BACK

HINTS

- Mountain range that stretches from Canada to New Mexico.
- This section is in Colorado and includes part of the Great Divide.

NEXT



WHERE IN THE WORLD IS THIS?

Lake Tahoe, CA/NV

Flathead Lake, MT

Lake George, NY

BACK

HINTS

- Located in the 4th largest state (by area) in the United States.
- It is one of the largest freshwater lakes west of the Mississippi River.

NEXT



WHERE IN THE WORLD IS THIS?

Lake Tahoe is west of the Mississippi but is located in California (3rd largest) and Nevada (7th largest). **Try again.**

Flathead Lake, MT

Lake George, NY

BACK

HINTS

- Located in the 4th largest state (by area) in the United States.
- It is one of the largest freshwater lakes west of the Mississippi River.

NEXT



WHERE IN THE WORLD IS THIS?

Lake Tahoe, CA/NV

Flathead Lake, MT

Lake George is east of the Mississippi and is in New York (27th largest state). **Try again.**

BACK

HINTS

- Located in the 4th largest state (by area) in the United States.
- It is one of the largest freshwater lakes west of the Mississippi River.

NEXT



WHERE IN THE WORLD IS THIS?

CORRECT! This is *Flathead Lake, MT.*

Did you know? Part of Flathead Lake is within Flathead Reservation where some of the people of the Salish, Kootenai, and Pend d'Oreille tribes, also known as the Confederated Salish and Kootenai Tribes of the Flathead Nation, live.

Learn more about this image by clicking [here](#).

BACK

HINTS

- Located in the 4th largest state (by area) in the United States.
- It is one of the largest freshwater lakes west of the Mississippi River.

NEXT



WHERE IN THE WORLD IS THIS?

**The Himalaya
Mountains**

**The Andes
Mountains**

**The Pyrenees
Mountains**

BACK

HINTS

- Located in South America along the border of Chile and Bolivia.
- It is the longest above-water mountain range in the world.

NEXT



WHERE IN THE WORLD IS THIS?

The Himalayas are ~1500 miles (~2400 km) long but are not the longest in the world. They are located in Asia. **Try again.**

**The Andes
Mountains**

**The Pyrenees
Mountains**

BACK

HINTS

- Located in South America along the border of Chile and Bolivia.
- It is the longest above-water mountain range in the world.

NEXT



WHERE IN THE WORLD IS THIS?

**The Himalaya
Mountains**

**The Andes
Mountains**

The Pyrenees are ~305 miles (~491 km) long and are located in Europe. **Try again.**

BACK

HINTS

- Located in South America along the border of Chile and Bolivia.
- It is the longest above-water mountain range in the world.

NEXT



WHERE IN THE WORLD IS THIS?

CORRECT! This is *The Andes Mountains*.

Did you know? The white regions along the mountains (center of the image) are salt flats where the evaporation of mineral-rich water leaves behind salt deposits. The largest salt flat in the image is called Salar de Uyuni.

Learn more about this image by clicking [here](#).

BACK

HINTS

- Located in South America along the border of Chile and Bolivia.
- It is the longest above-water mountain range in the world. k

NEXT



WHERE IN THE WORLD IS THIS?

The Sahara Desert

The Mohave Desert

The Atacama Desert

BACK

HINTS

- This is the largest hot desert on planet Earth.
- This desert is in the 2nd largest continent (by area).

NEXT



WHERE IN THE WORLD IS THIS?

The Sahara Desert

The Mohave Desert is in North America (3rd largest continent) and is mostly in California and Nevada. **Try again.**

The Atacama Desert

BACK

HINTS

- This is the largest hot desert on planet Earth.
- This desert is in the 2nd largest continent (by area).

NEXT



WHERE IN THE WORLD IS THIS?

The Sahara Desert

The Mohave Desert

The Atacama Desert is in South America (4th largest continent) and is primarily in Chile. Try again.

BACK

HINTS

- This is the largest hot desert on planet Earth.
- This desert is in the 2nd largest continent (by area).

NEXT



WHERE IN THE WORLD IS THIS?

CORRECT! This is *The Sahara Desert*.

Did you know? The Sahara Desert is in Africa. The dark feature in this image is Toussidé Volcano, and the dark tracks below it are lava flows. These geologically young, dark lava flows stand out from the older, lighter sands of the central Sahara Desert.

Learn more about this image by clicking [here](#).

BACK

HINTS

- This is the largest hot desert on planet Earth.
- This desert is in the 2nd largest continent (by area).

NEXT



WHERE IN THE WORLD IS THIS?

**Colca Canyon,
Peru**

**Grand Canyon, AZ,
United States**

**Richat Structure,
Mauritania**

BACK

HINTS

- Located in the 2nd largest continent (by area).
- Known as the “Eye of the Sahara.”

NEXT



WHERE IN THE WORLD IS THIS?

The Colca Canyon is in South America which is the 4th largest continent (by area). **Try again.**

**Grand Canyon, AZ,
United States**

**Richat Structure,
Mauritania**

BACK

HINTS

- Located in the 2nd largest continent (by area).
- Known as the “Eye of the Sahara.”

NEXT



WHERE IN THE WORLD IS THIS?

**Colca Canyon,
Peru**

The Grand Canyon is in North America which is the 3rd largest continent (by area). **Try again.**

**Richat Structure,
Mauritania**

BACK

HINTS

- Located in the 2nd largest continent (by area).
- Known as the “Eye of the Sahara.”

NEXT



WHERE IN THE WORLD IS THIS?

CORRECT! This is the *Richat Structure, Mauritania*.

Did you know? The Richat Structure is a “domed anticline” or an uplifted dome-like structure that has been eroded, exposing rock layers in circular patterns. Like tree rings, the inner rings of rocks are older than those in the outer rings.

Learn more about this image by clicking [here](#).

BACK

HINTS

- Located in the 2nd largest continent (by area).
- Known as the “Eye of the Sahara.”

NEXT



WHERE IN THE WORLD IS THIS?

**Cleveland Volcano,
AK**

Mount Shasta, CA

**Mount St. Helens,
WA**

BACK

HINTS

- It is part of the largest state (by area) in the United States.
- Located in the waters of the Bering Sea and Pacific Ocean.

NEXT



WHERE IN THE WORLD IS THIS?

**Cleveland Volcano,
AK**

Mount Shasta is in California,
the 3rd largest state (by area).
Try again.

**Mount St. Helens,
WA**

BACK

HINTS

- It is part of the largest state (by area) in the United States.
- Located in the waters of the Bering Sea and Pacific Ocean.

NEXT



WHERE IN THE WORLD IS THIS?

**Cleveland Volcano,
AK**

Mount Shasta, CA

Mount St. Helens is in Washington, the 18th largest state (by area). **Try again.**

BACK

HINTS

- It is part of the largest state (by area) in the United States.
- Located in the waters of the Bering Sea and Pacific Ocean.

NEXT



WHERE IN THE WORLD IS THIS?

CORRECT! This is *Cleveland Volcano, AK*.

Did you know? At 3pm in Alaska on May 23, 2006, an astronaut on the International Space Station called down to Earth to report this plume of ash produced by the Cleveland Volcano, one of the most active volcanoes in the Aleutian Islands.

Learn more about this image by clicking [here](#).

BACK

HINTS

- It is part of the largest state (by area) in the United States.
- Located in the waters of the Bering Sea and Pacific Ocean.

NEXT



WHERE IN THE WORLD IS THIS?

Cape Horn, Chile

Cape Cod, MA,
United States

Cape of Good Hope,
South Africa

BACK

HINTS

- Located in North America.
- It is surrounded by the waters of the Atlantic Ocean.

NEXT



WHERE IN THE WORLD IS THIS?

Cape Horn is in South America, surrounded by the Pacific and Atlantic Oceans. **Try again.**

**Cape Cod, MA,
United States**

**Cape of Good Hope,
South Africa**

BACK

HINTS

- Located in North America.
- It is surrounded by the waters of the Atlantic Ocean.

NEXT



WHERE IN THE WORLD IS THIS?

Cape Horn, Chile

**Cape Cod, MA,
United States**

Cape of Good Hope is in Africa, surrounded by the Atlantic and Indian Oceans. **Try again.**

BACK

HINTS

- Located in North America.
- It is surrounded by the waters of the Atlantic Ocean.

NEXT



WHERE IN THE WORLD IS THIS?

CORRECT! This is *Cape Cod, MA, United States.*

Did you know? Cape Cod was created by deposits from Ice Age glaciers 20,000 years ago. As glaciers melted, sea levels rose submerging areas previously covered by ice. Erosion from waves and sea currents led to its peculiar shape.

Learn more about this image by clicking [here](#).

BACK

HINTS

- Located in North America.
- It is surrounded by the waters of the Atlantic Ocean.

NEXT



WHERE IN THE WORLD IS THIS?

Island of Ibiza, Spain

Semirara Island,
Philippines

Andros Island,
The Bahamas

BACK

HINTS

- Located in the waters of the South China and Philippine Seas.
- Manila is the capital of the nation to which this island belongs.

NEXT



WHERE IN THE WORLD IS THIS?

Ibiza is in the Balearic Sea, which is to the west of the Mediterranean Sea. **Try again.**

**Semirara Island,
Philippines**

**Andros Island,
The Bahamas**

BACK

HINTS

- Located in the waters of the South China and Philippine Seas.
- Manila is the capital of the nation to which this island belongs.

NEXT



WHERE IN THE WORLD IS THIS?

Island of Ibiza, Spain

Semirara Island,
Philippines

Andros Island is part of The Bahamas which lie in the Atlantic Ocean. **Try again.**

BACK

HINTS

- Located in the waters of the South China and Philippine Seas.
- Manila is the capital of the nation to which this island belongs.

NEXT



WHERE IN THE WORLD IS THIS?

CORRECT! This is *Semirara Island, Philippines*.

Did you know? The crater-like feature near the center of the image is the Panian coalfield. It was formed 12-23 million years ago when pressure from the overlying rocks, over geologic time, changed the layers of organic material into coal.

Learn more about this image by clicking [here](#).

BACK

HINTS

- Located in the waters of the South China and Philippine Seas.
- Manila is the capital of the nation to which this island belongs.

NEXT



WHERE IN THE WORLD IS THIS?

**Lonar Crater,
India**

**Manicouagan Crater,
Canada**

**Ouarkziz Crater,
Algeria**

BACK

HINTS

- The circular feature in this image is within the Sahara Desert.
- Located in a country in northern Africa.

NEXT



WHERE IN THE WORLD IS THIS?

Lunar Crater is located in southeast Asia in India.
Try again.

**Manicouagan Crater,
Canada**

**Ouarkziz Crater,
Algeria**

BACK

HINTS

- The circular feature in this image is within the Sahara Desert.
- Located in a country in northern Africa.

NEXT



WHERE IN THE WORLD IS THIS?

**Lonar Crater,
India**

Manicouagan Crater is located
in North America in Canada.
Try again.

**Ouarkziz Crater,
Algeria**

BACK

HINTS

- The circular feature in this image is within the Sahara Desert.
- Located in a country in northern Africa.

NEXT



WHERE IN THE WORLD IS THIS?

CORRECT! This is the *Ouarkiz Crater, Algeria*.

Did you know? Ouarkiz is the result of a meteor impact < 70 million years ago during the late Cretaceous Period of the Mesozoic Era ("Age of the Dinosaurs"). Geologists know the crater is younger than the surrounding rock layers it hit because the crater is on top of these layers.

Learn more about this image by clicking [here](#).

BACK

HINTS

- The circular feature in this image is within the Sahara Desert.
- Located in a country in northern Africa.

NEXT



WHERE IN THE WORLD IS THIS?

**Steppes of Southern
Russia**

The South Pole

**Greenland National
Park**

BACK

HINTS

- Located in the largest country (by area) in the world.
- In a country that spans across the continents of Europe and Asia.

NEXT



WHERE IN THE WORLD IS THIS?

**Steppes of Southern
Russia**

The South Pole is in the
continent of Antarctica.
Try again.

**Greenland National
Park**

BACK

HINTS

- Located in the largest country (by area) in the world.
- In a country that spans across the continents of Europe and Asia.

NEXT



WHERE IN THE WORLD IS THIS?

**Steppes of Southern
Russia**

The South Pole

Greenland National Park is on the world's largest island and is located between the Arctic and Atlantic Oceans. **Try again.**

BACK

HINTS

- Located in the largest country (by area) in the world.
- In a country that spans across the continents of Europe and Asia.

NEXT



ISS050-E-52312

WHERE IN THE WORLD IS THIS?

CORRECT! This is the *Steppes of Southern Russia*.

Did you know? The darker lines across the image are “shelterbelts” which are lines of trees planted to help prevent wind erosion of the farmlands in this area. The thinner, shorter lines are trees protecting individual farms from erosion.

Learn more about this image by clicking [here](#).

BACK

HINTS

- Located in the largest country (by area) in the world.
- In a country that spans across the continents of Europe and Asia.

NEXT



WHERE IN THE WORLD IS THIS?

**Dragon Cone,
Canada**

**Cerro Culiacan,
Mexico**

**Meidob Volcanic
Field, Sudan**

BACK

HINTS

- This landform is along the southern Sahara Desert in Africa.
- Located in a country that has a coastline with the Red Sea.

NEXT



WHERE IN THE WORLD IS THIS?

Dragon Cone is in British Columbia, Canada in North America. Try again.

**Cerro Culiacan,
Mexico**

**Meidob Volcanic
Field, Sudan**

BACK

HINTS

- This landform is along the southern Sahara Desert in Africa.
- Located in a country that has a coastline with the Red Sea.

NEXT



WHERE IN THE WORLD IS THIS?

**Dragon Cone,
Canada**

Cerro Culiacan is in central Mexico in North America.
Try again.

**Meidob Volcanic
Field, Sudan**

BACK

HINTS

- This landform is along the southern Sahara Desert in Africa.
- Located in a country that has a coastline with the Red Sea.

NEXT



WHERE IN THE WORLD IS THIS?

CORRECT! This is *Meidob Volcanic Field, Sudan*.

Did you know? The Meidob Volcanic Field covers an area of ~1,930 square miles (~5,000 square kilometers) in Sudan. It has ~700 volcanic vents thought to be < 6 million years old.

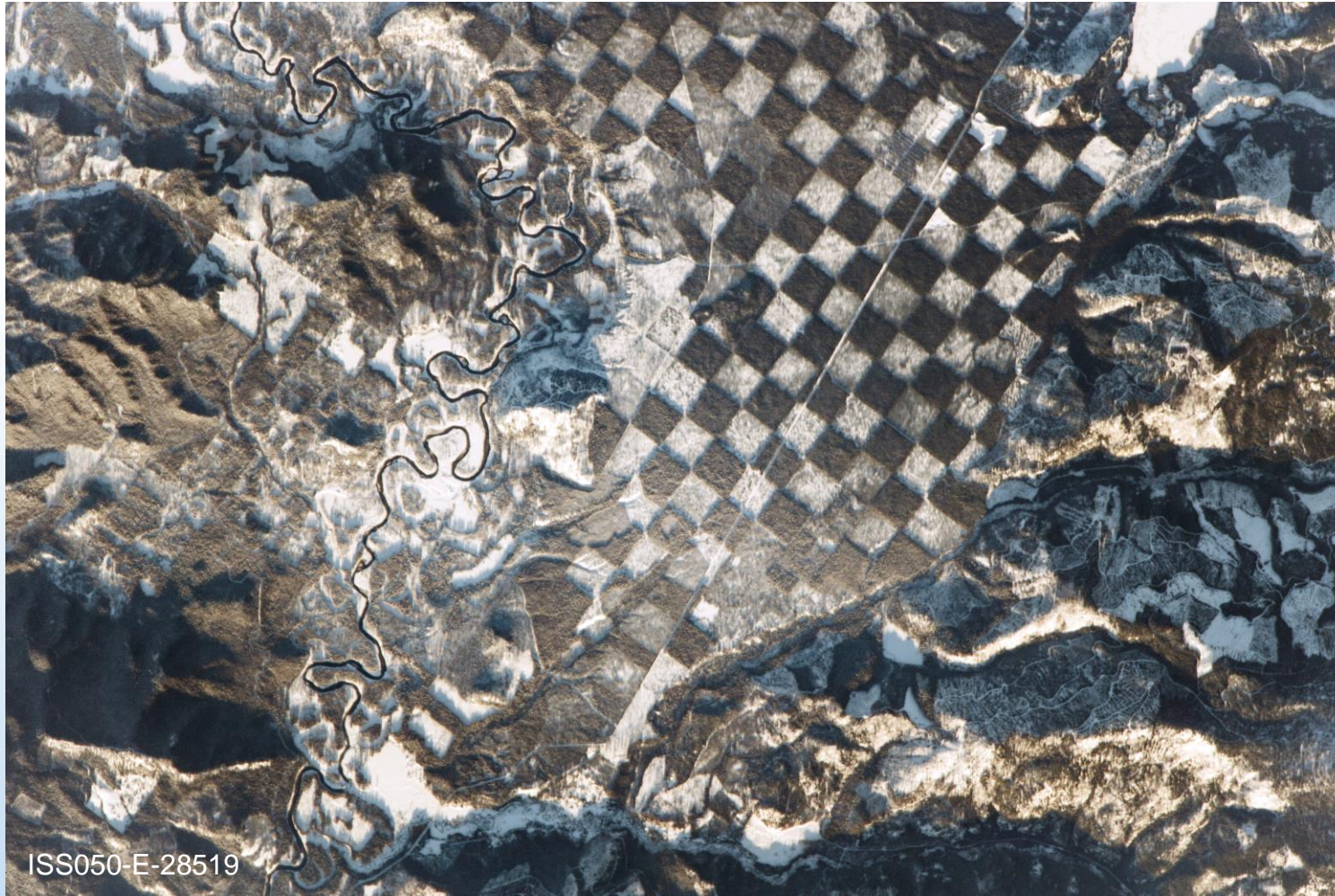
Learn more about this image by clicking [here](#).

BACK

HINTS

- This landform is along the southern Sahara Desert in Africa.
- Located in a country that has a coastline with the Red Sea.

NEXT



WHERE IN THE WORLD IS THIS?

Tennessee

Idaho

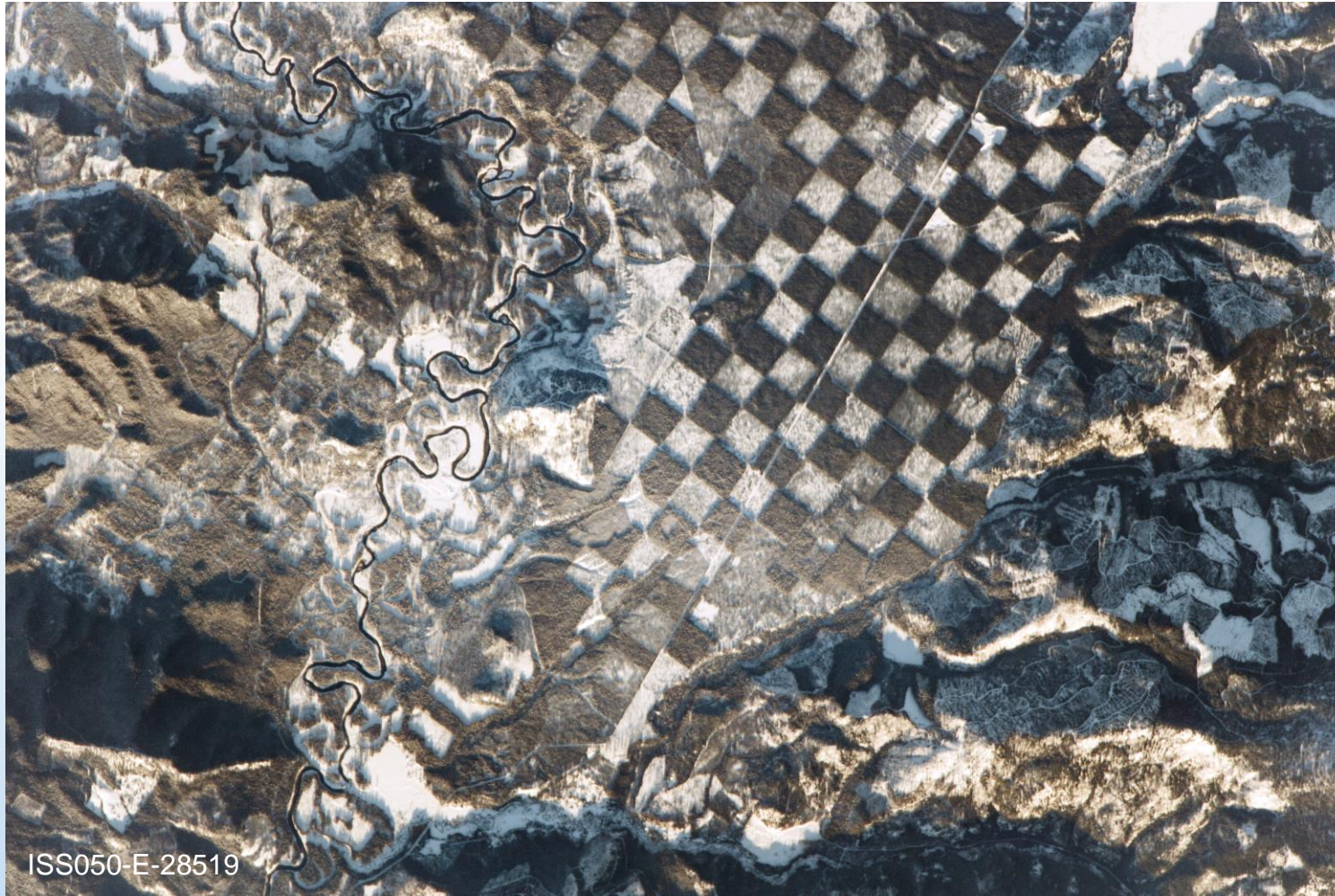
Arizona

BACK

HINTS

- This state is in the northwestern region of the United States.
- The nickname of this state is the "Gem State."

NEXT



WHERE IN THE WORLD IS THIS?

Tennessee is in south central US and is nicknamed the "Volunteer State". **Try again.**

Idaho

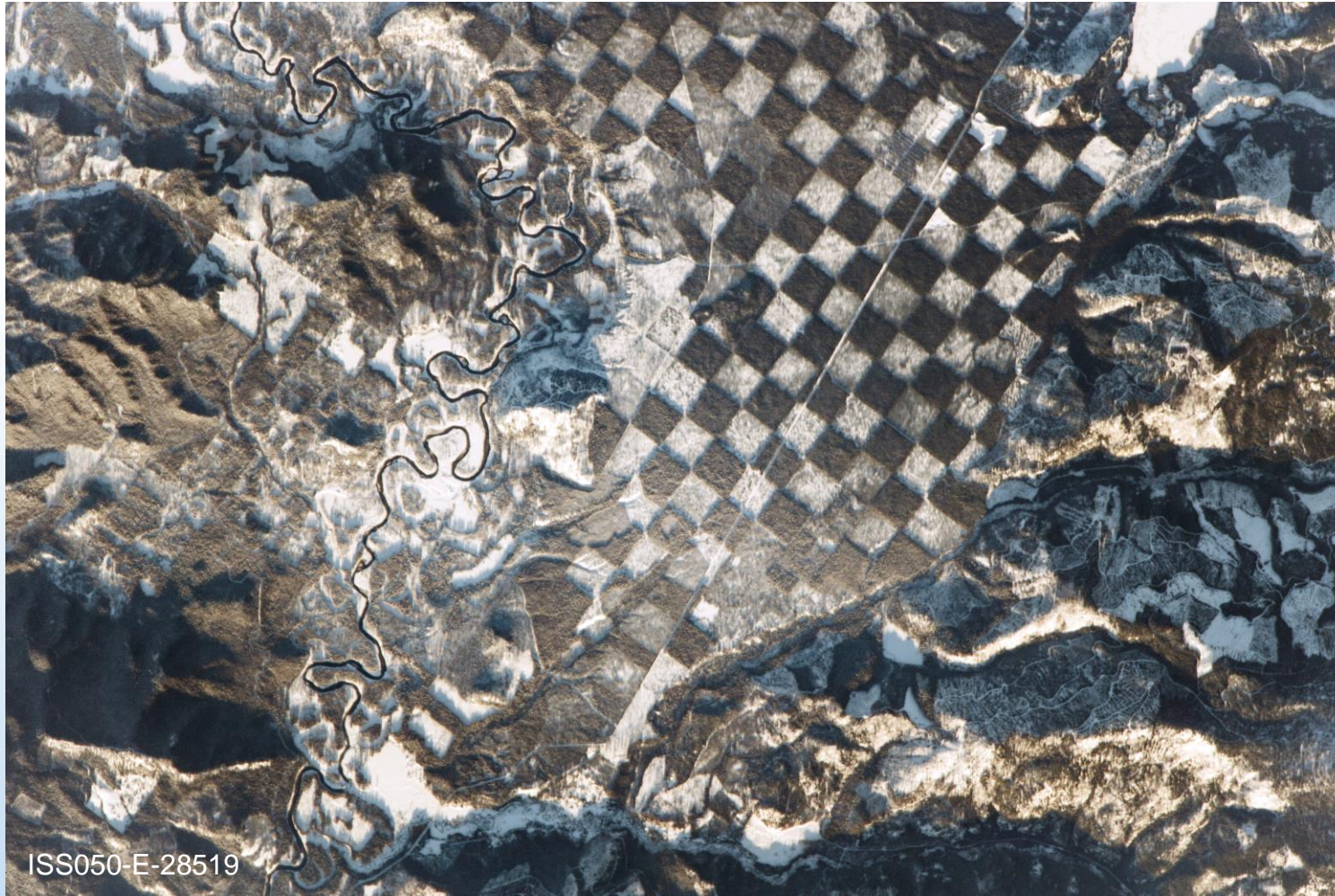
Arizona

BACK

HINTS

- This state is in the northwestern region of the United States.
- The nickname of this state is the "Gem State."

NEXT



WHERE IN THE WORLD IS THIS?

Tennessee

Idaho

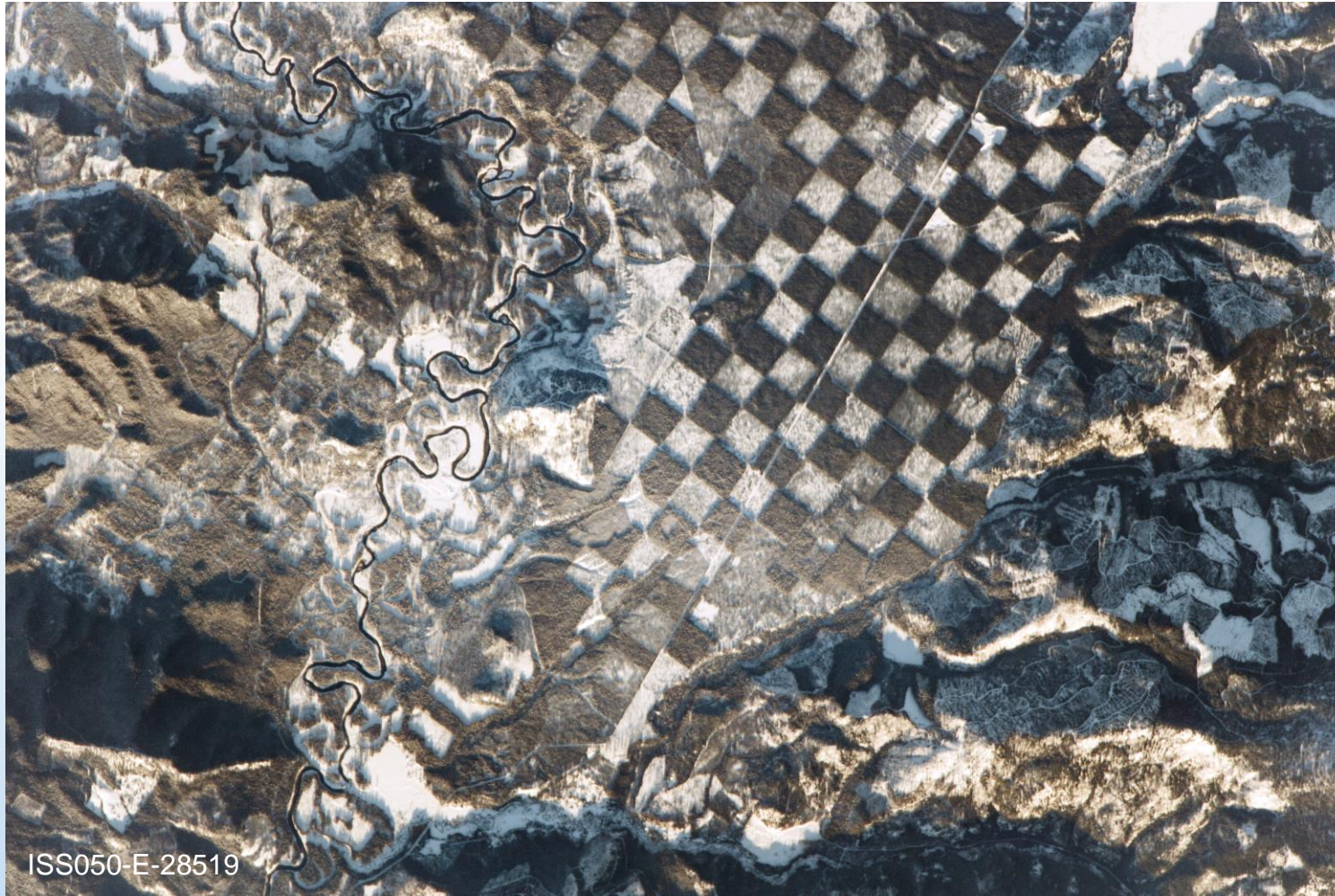
Arizona is in the southwestern US & is nicknamed the “Grand Canyon State”. **Try again.**

BACK

HINTS

- This state is in the northwestern region of the United States.
- The nickname of this state is the “Gem State.”

NEXT



WHERE IN THE WORLD IS THIS?

CORRECT! This is *Idaho*.

Did you know? This checkerboard pattern is visible along the Priest River (running along the left side) in northern Idaho. The white squares show snow covered deforested ground, while the dark squares are regions of dense forest.

Learn more about this image by clicking [here](#).

BACK

HINTS

- This state is in the northwestern region of the United States.
- The nickname of this state is the "Gem State."

NEXT



WHERE IN THE WORLD IS THIS?

**Betsiboka River
Delta, Madagascar**

**Nile River Delta,
Egypt**

**Mississippi River
Delta, United States**

BACK

HINTS

- Located on an island nation just off the coast of Africa.
- This river empties into the Bombetoka Bay forming a large delta.

NEXT



WHERE IN THE WORLD IS THIS?

**Betsiboka River
Delta, Madagascar**

The Nile flows through Africa & empties into the Mediterranean Sea forming the Nile River Delta. **Try again.**

**Mississippi River
Delta, United States**

BACK

HINTS

- Located on an island nation just off the coast of Africa.
- This river empties into the Bombetoka Bay forming a large delta.

NEXT



WHERE IN THE WORLD IS THIS?

**Betsiboka River
Delta, Madagascar**

**Nile River Delta,
Egypt**

The Mississippi flows through the US & empties into the Gulf of Mexico forming the Mississippi River Delta. **Try again.**

BACK

HINTS

- Located on an island nation just off the coast of Africa.
- This river empties into the Bombetoka Bay forming a large delta.

NEXT



ISS056-E-62768

WHERE IN THE WORLD IS THIS?

CORRECT! This is the ***Betsiboka River Delta, Madagascar.***

Did you know? The Betsiboka River carries sediment from the high central plateau & mountains of Madagascar to the western coast where it empties into Bombetoka Bay & Mozambique Channel. Clay-rich sediments give the water its rusty orange color.

Learn more about this image by clicking [here](#).

BACK

HINTS

- Located on an island nation just off the coast of Africa.
- This river empties into the Bombetoka Bay forming a large delta.

NEXT



WHERE IN THE WORLD IS THIS?

**Whakaari (White
Island), New Zealand**

Mount Etna, Italy

**Momotombo
Volcano, Nicaragua**

BACK

HINTS

- Located in Central America.
- In a country with coasts along the Caribbean Sea & Pacific Ocean.

NEXT



WHERE IN THE WORLD IS THIS?

Whakaari is in the Pacific Ocean on the island nation of New Zealand. **Try again.**

Mount Etna, Italy

**Momotombo
Volcano, Nicaragua**

BACK

HINTS

- Located in Central America.
- In a country with coasts along the Caribbean Sea & Pacific Ocean.

NEXT



WHERE IN THE WORLD IS THIS?

Whakaari (White Island), New Zealand

Mount Etna is on the east coast of Sicily, Italy, an island in the Mediterranean Sea. **Try again.**

**Momotombo
Volcano, Nicaragua**

BACK

HINTS

- Located in Central America.
- In a country with coasts along the Caribbean Sea & Pacific Ocean.

NEXT



WHERE IN THE WORLD IS THIS?

CORRECT! This is *Momotombo Volcano, Nicaragua*.

Did you know? Momotombo Volcano has been described as “the smoking terror.” A geothermal field surrounds this stratovolcano which has been used to produce renewable energy since 1983.

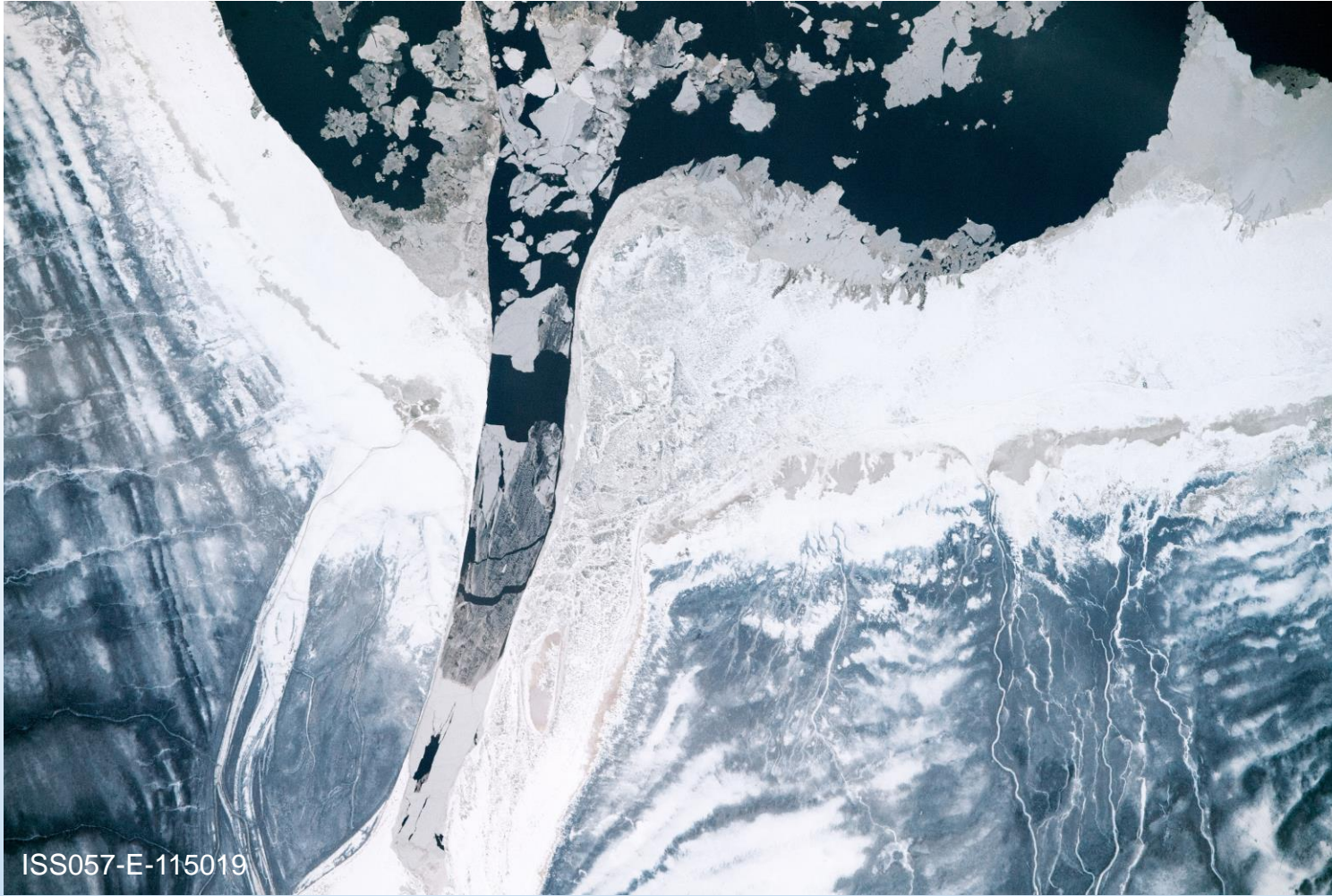
Learn more about this image by clicking [here](#).

BACK

HINTS

- Located in Central America.
- In a country with coasts along the Caribbean Sea & Pacific Ocean.

NEXT



WHERE IN THE WORLD IS THIS?

**Volga River,
Russia**

**Yangtze River,
China**

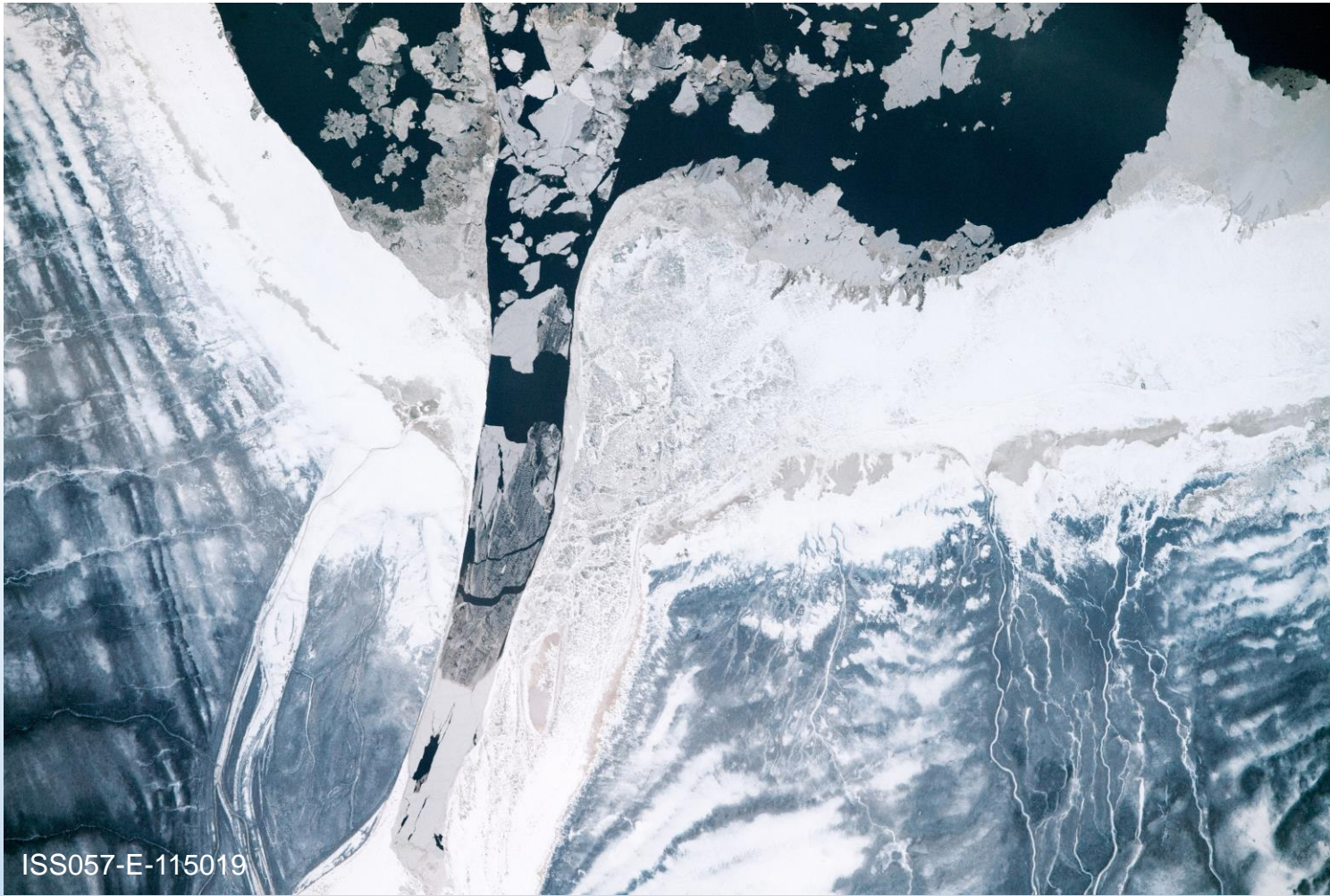
**Moose River,
Canada**

BACK

HINTS

- Located in Ontario, a province/territory in this North American nation.
- This river empties into James Bay.

NEXT



WHERE IN THE WORLD IS THIS?

The Volga River runs across Europe and Asia and empties into the Caspian Sea.
Try again.

**Yangtze River,
China**

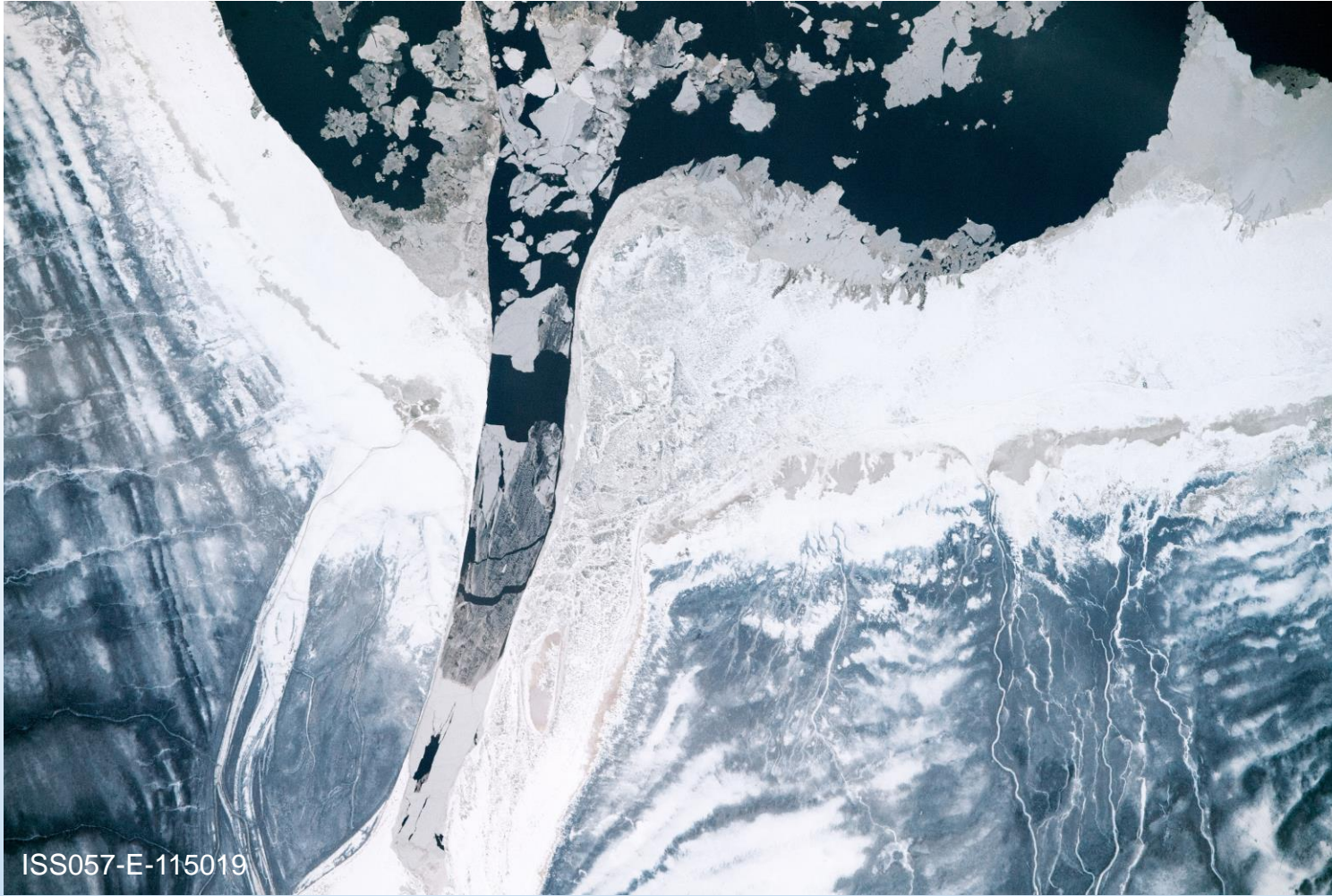
**Moose River,
Canada**

BACK

HINTS

- Located in Ontario, a province/territory in this North American nation.
- This river empties into James Bay.

NEXT



WHERE IN THE WORLD IS THIS?

**Volga River,
Russia**

The Yangtze River is in Asia and empties into the South China Sea. Try again.

**Moose River,
Canada**

BACK

HINTS

- Located in Ontario, a province/territory in this North American nation.
- This river empties into James Bay.

NEXT



WHERE IN THE WORLD IS THIS?

CORRECT! This is *Moose River, Canada*.

Did you know? This image shows Moose River partially frozen in December 2018. The James Bay freezes every year from November to January. White ice surrounds the Moose River outlet and is “older” than the thin grey ice further out in the bay.

Learn more about this image by clicking [here](#).

BACK

HINTS

- Located in Ontario, a province/territory in this North American nation.
- This river empties into James Bay.

NEXT



WHERE IN THE WORLD IS THIS?

**The Eastern Rift
Mountains, Africa**

**The Himalaya
Mountains, Asia**

**The Alaska Range,
North America**

BACK

HINTS

- This mountain range is located along the Tibetan Plateau.
- The world's tallest mountain (image center) borders Nepal and China.

NEXT



WHERE IN THE WORLD IS THIS?

The Eastern Rift Mountains are in Africa and run mostly through Tanzania. **Try again.**

**The Himalaya
Mountains, Asia**

**The Alaska Range,
North America**

BACK

HINTS

- This mountain range is located along the Tibetan Plateau.
- The world's tallest mountain (image center) borders Nepal and China.

NEXT



WHERE IN THE WORLD IS THIS?

**The Eastern Rift
Mountains, Africa**

**The Himalaya
Mountains, Asia**

The Alaska Range is in North America and is contained within Alaska, US. **Try again.**

BACK

HINTS

- This mountain range is located along the Tibetan Plateau.
- The world's tallest mountain (image center) borders Nepal and China.

NEXT



WHERE IN THE WORLD IS THIS?

CORRECT! This is *The Himalaya Mountains, Asia*.

Did you know? The Himalaya Mountains separate the plains of the Indian subcontinent from the Tibetan Plateau. They are home to many of Earth's highest peaks including Mount Everest, the tallest peak in the world, shown in the center of this image.

Learn more about this image by clicking [here](#).

BACK

HINTS

- This mountain range is located along the Tibetan Plateau.
- The world's tallest mountain (image center) borders Nepal and China.

NEXT



WHERE IN THE WORLD IS THIS?

Comb Ridge, UT/AZ

Hurricane Ridge, WA

San Andreas Fault,
CA

BACK

HINTS

- Located in the southwestern region of the United States.
- Part of this landscape lies in the 13th largest state (by area).

NEXT



WHERE IN THE WORLD IS THIS?

Comb Ridge, UT/AZ

Hurricane Ridge is in the north western US and is located in Washington (18th largest state by area). **Try again.**

**San Andreas Fault,
CA**

BACK

HINTS

- Located in the southwestern region of the United States.
- Part of this landscape lies in the 13th largest state (by area).

NEXT



WHERE IN THE WORLD IS THIS?

Comb Ridge, UT/AZ

Hurricane Ridge, WA

The San Andreas Fault is in the western US and runs through California (3rd largest state by area). **Try again.**

BACK

HINTS

- Located in the southwestern region of the United States.
- Part of this landscape lies in the 13th largest state (by area).

NEXT



WHERE IN THE WORLD IS THIS?

CORRECT! This is the *Comb Ridge, UT/AZ*.

Did you know? Comb Ridge is a geologic formation, created 40-70 million years ago, known as a monocline. This type of structure occurs when previously flat rock layers fold downward in one direction & then flatten out away from the fold.

Learn more about this image by clicking [here](#).

BACK

HINTS

- Located in the southwestern region of the United States.
- Part of this landscape lies in the 13th largest state (by area).

NEXT



WHERE IN THE WORLD IS THIS?

**Lake Michigan,
United States**

**Loch Ness,
Scotland**

**Lake Fitri,
Chad**

BACK

HINTS

- This lake is located in a landlocked country in central north Africa.
- Located ~186 miles (~300 km) east of this nation's capital, N'Djamena.

NEXT



WHERE IN THE WORLD IS THIS?

Lake Michigan is one of the five Great Lakes that lie between Canada and the US. **Try again.**

**Loch Ness,
Scotland**

**Lake Fitri,
Chad**

BACK

HINTS

- This lake is located in a landlocked country in central north Africa.
- Located ~186 miles (~300 km) east of this nation's capital, N'Djamena.

NEXT



WHERE IN THE WORLD IS THIS?

**Lake Michigan,
United States**

Loch Ness is in the country of Scotland which is part of the United Kingdom. **Try again.**

**Lake Fitri,
Chad**

BACK

HINTS

- This lake is located in a landlocked country in central north Africa.
- Located ~186 miles (~300 km) east of this nation's capital, N'Djamena.

NEXT



WHERE IN THE WORLD IS THIS?

CORRECT! This is *Lake Fitri, Chad*.

Did you know? Lake Fitri is an endorheic or “terminal” lake. This kind of lake forms in desert areas that get so little rainfall that rivers cannot outflow to other external bodies of water so they end at depressions in the land surface where they form lakes.

Learn more about this image by clicking [here](#).

BACK

HINTS

- This lake is located in a landlocked country in central north Africa.
- Located ~186 miles (~300 km) east of this nation’s capital, N’Djamena.

NEXT



Thanks for completing the
WHERE IN THE WORLD IMAGE QUIZ!

Visit <https://eol.jsc.nasa.gov/> to view more astronaut photography.

*Developed by Astromaterials Research and Exploration Science (ARES) at the NASA Johnson Space Center (JSC)
Images courtesy of the Earth Science and Remote Sensing (ESRS) Unit, NASA JSC (<https://eol.jsc.nasa.gov/>)
Background image ISS024-E-14587*